



Acquisition Directorate

Assistant Commandant for Acquisition

Doing Business with the U.S. Military: The Coast Guard Waterways Commerce Cutter Program

Ms. Aileen Sedmak, BOSN2 Tyler Young

WorkBoat Think Tank | January 20, 2021



Objective

- **Provide a status of WCC procurements.**
- **Inform industry members of the Coast Guard's unique river buoy and inland construction tender missions so they can better understand and better respond to our upcoming Request for Proposal (RFP).**



Program Status and Progress

- **At WorkBoat 2019, the program proposed cutter visits in 2020 to help industry better understand operations.**
 - COVID-19 prevented in-person cutter visits.
- **Draft WLR/WLIC RFP released July 2020 for industry feedback.**
- **Request for Proposal for the River Buoy Tenders (WLRs) and Inland Construction Tenders (WLICs) anticipated during spring 2021.**



River Buoy Tenders (WLR)

- **Service short-range aids to navigation (ATON) on the Western Rivers. They set, relocate, and recover buoys to mark the navigable channel in the rivers as the water level changes.**
- **Establish and maintain fixed aids, lights, and daybeacons within their area of responsibility.**



Inland Construction Tenders (WLIC)

- **Construct, repair, and maintain fixed ATON within inland waterways along the Eastern Seaboard and Gulf of Mexico.**
- **Only Coast Guard platform with the capability to drive and remove piles, erect towers, and effect major structural repairs.**



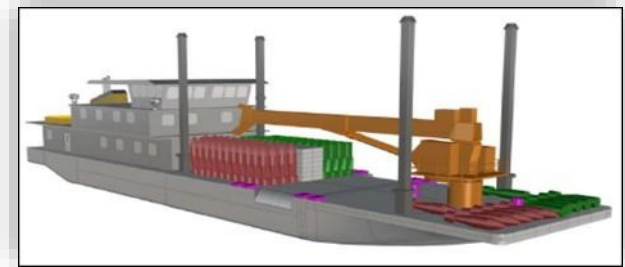
WCC Procurements

- **River Buoy and Inland Construction Tenders:**

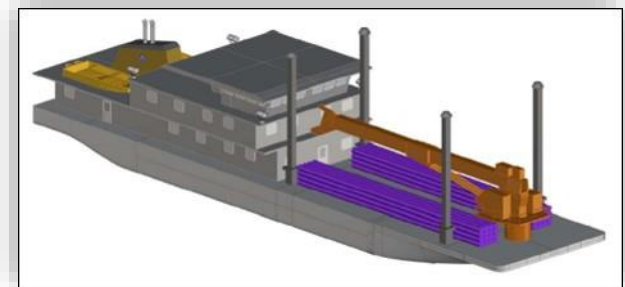
- Design/build contract.
- 27 tenders (16 WLR, 11 WLIC).
- RFP anticipated during spring 2021.

- **Inland Buoy Tenders:**

- Government-led design, commercial build.
- 3 cutters.
- RFP anticipated in late 2023.



Notional WLR Design



Notional WLIC Design



Notional WLI Design

Cutter Videos

River Buoy Tender Operations:

<https://www.dvidshub.net/video/780566/river-tender-virtual-tour>



Inland Construction Tender Operations:

<https://www.dvidshub.net/video/780567/construction-tender-virtual-tour>



Key Performance Parameters

Criterion		River Buoy Tender	Inland Construction Tender	Inland Buoy Tender
Access	Length (maximum)	180 ft.	160 ft.	120 ft.
	Draft (end-of-service-life, full load)	≤ 5 ft. 6 in.		
	Maneuverability	Ability to approach, establish, discontinue, and maintain floating ATON and fixed ATON structures that are located in 4 ft. of water up to 20 ft. from “good” water (≥ 5 ft. depth) without touching the riverbed or seafloor.		
Speed		Open Water – Threshold: 11 knots, Objective: 13 knots		
Endurance		Threshold: 11 days Objective: 15 days		Threshold: 7 days Objective: 10 days
Mission Execution		Up to USCG 4NR buoy (deck cargo capacity 275,000 lbs.)	Up to 60 ft. pile (deck cargo capacity 100,000 lbs.)	Up to USCG 1992-type 6x20 LR buoy (deck cargo capacity 30,600 lbs.)

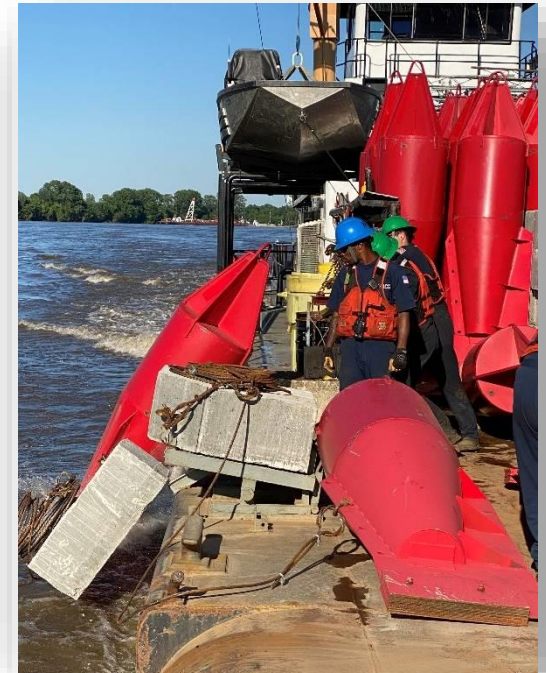
Operationally Critical Characteristics

- **Bridge and deck layout.**
- **Berthing:**
 - Mixed-gender.
 - WLR/WLIC: 16 (threshold), 19 (objective).
 - WLI: 14 (threshold), 16 (objective).
- **Mudroom.**
- **Damage control locker.**
- **Cutter boat.**



WLR Operations: Setting a Line

WLRs carry a large amount of buoys and sinkers due to the high volume of floating aids needed to mark an ever-changing river. These buoys are typically set while the ship is making way, and often, many will be set consecutively without stopping. One part of the deck crew will be setting buoys while another is reloading sinkers and buoys.



WLR Operations: Clearing Brush



WLR Operations: Jetting

Due to the unique sandy bottom of the Missouri River, cutters spud down and use a 40-foot pipe connected to the fire main to insert a cone deep into the river bed holding the buoy in place. This method is called “jetting” and takes longer to set buoys.



WLIC Operations: Wreckage Removal



WLIC Operations: Pile Drivers

- **Impact Hammer**
 - Most widely used.
 - Currently owned: Delmag D6-32 Diesel Hammer.
- **Vibratory Driver/Extractor**
 - Used in specific conditions.
 - Currently rented:
 - ICE Model 216.
 - ICE Model 14D.



WLIC Operations: Stages





Questions?